

Bishop's View

APARTMENTS & TOWNHOMES



Bishop's View

APARTMENTS & TOWNHOMES

APARTMENT FEATURES:

- Stainless appliances & wood-style flooring*
- Tile backsplashes & espresso cabinets*
- Built-in bookshelves*
- Full-size washer & dryer
- Gas cooking & gas heat
- Oversized walk-in closets
- Private patios & balconies with french doors

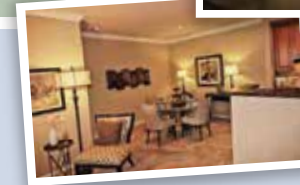
*In select homes

COMMUNITY FEATURES:

- 24-hour fitness center & dry sauna
- Resort-style heated swimming pool
- Pet friendly
- Garages available
- On-site storage units
- High-speed Internet & WiFi
- 24-hour emergency maintenance

Online Resident Services

- ✓ Pay Your Rent Online
- ✓ Submit Resident Feedback
- ✓ Submit Maintenance Requests
- ✓ Routine Customer Service Surveys
- ✓ Update Vehicle Information
- ✓ Search Local Area
- ✓ Read Community News
- ✓ Update Contact Information



Bishop's View Apartments & Townhomes

2395 Route 70 West • Cherry Hill, NJ 08002

Phone: 856-910-2400 Fax: 856-910-0707

Property Email:

bishopsvviewleasing@morganproperties.com

MORGAN
PROPERTIES

Professionally managed by
Morgan Properties



Spacious 1, 2 & 3 bedroom
apartment homes & townhomes

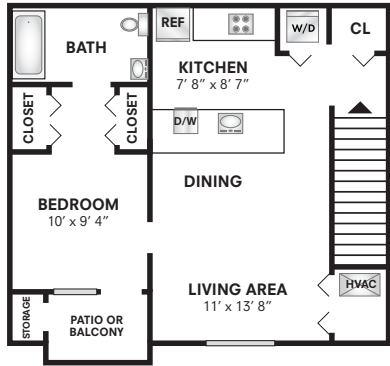


Scan to view our video, photos,
floor plans & more!

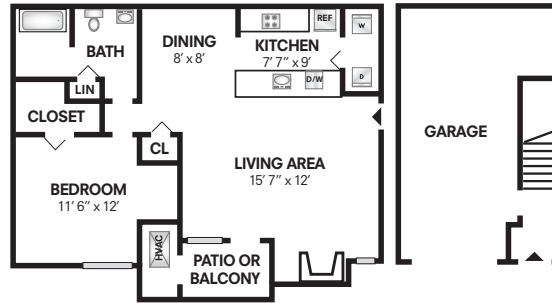
morganproperties.com

morganproperties.com

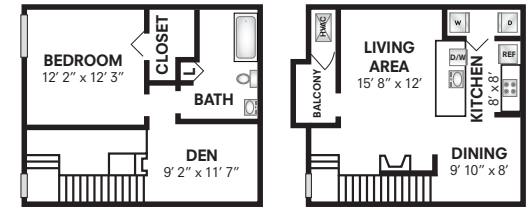
FLOOR PLANS



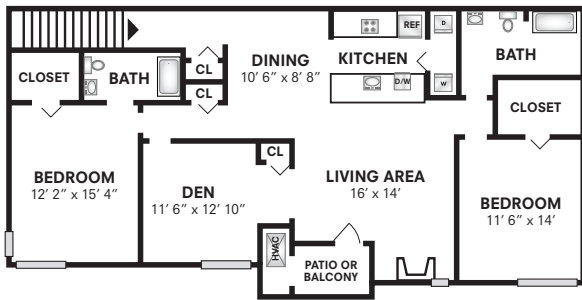
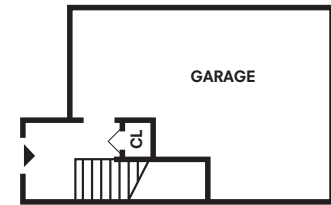
The Pawn
ONE BEDROOM / ONE BATH - 605 sq. ft.
 Square footage is approximate



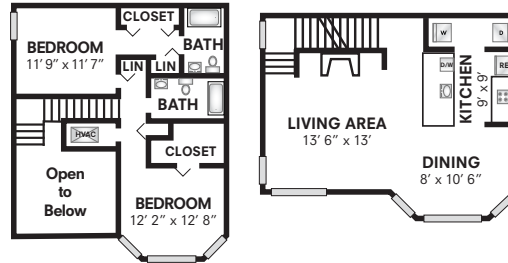
The Rook
ONE BEDROOM / ONE BATH - 801 sq. ft.
 Square footage is approximate



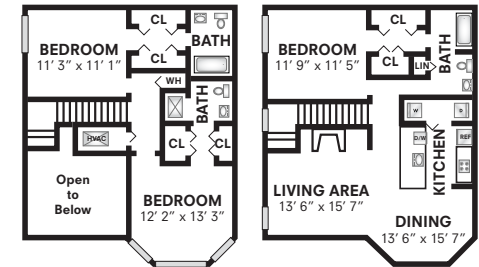
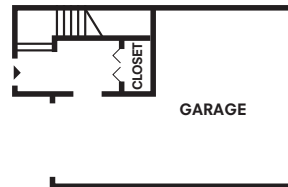
The Bishop
ONE BEDROOM / ONE BATH - 945 sq. ft.
 Square footage is approximate



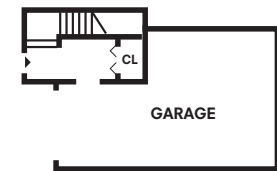
The Knight
TWO BEDROOM / TWO BATH - 1094 sq. ft.
 Square footage is approximate



The Queen
TWO BEDROOM / TWO BATH - 1191 sq. ft.
 Square footage is approximate



The King
THREE BEDROOM / THREE BATH - 1495 sq. ft.
 Square footage is approximate



Additional Notes
