

THE WATERWAY APARTMENTS

APARTMENT FEATURES:

- Full-size washer & dryer in every home
- Expansive floor plans offering oversized closets
- Luxury accents including soaking tubs & nine-foot ceilings
- Private patio or balcony with every home
- Enhanced kitchens, fully-equipped, with modern finishes

COMMUNITY FEATURES:

- Refreshing swimming pool with outdoor lounge seating & poolside WiFi
- Top-notch amenities including 24-hour indoor fitness studio, playground & business center
- New in 2016: outdoor fitness stations, putting green, outdoor ping pong & foosball tables & car care center
- Pet-friendly community with state-of-the-art bar park coming in 2016
- 24-hour emergency maintenance



Scan to view our video, photos,
floor plans & more!



ONLINE *Resident Services*

- ✓ PAY YOUR RENT ONLINE
- ✓ SUBMIT RESIDENT FEEDBACK
- ✓ SUBMIT MAINTENANCE REQUESTS
- ✓ ROUTINE CUSTOMER SERVICE SURVEYS
- ✓ UPDATE VEHICLE INFORMATION
- ✓ SEARCH LOCAL AREA
- ✓ READ COMMUNITY NEWS
- ✓ UPDATE CONTACT INFORMATION

THE WATERWAY APARTMENTS
121 Northpoint Dr. • Lexington, SC 29072

PHONE: 803-951-2025 FAX: 803-356-8995

PROPERTY EMAIL:
waterwayleasing@morgan-properties.com



Professionally managed by
Morgan Properties



/MorganProps



/MorganProps



/MorganPropertie

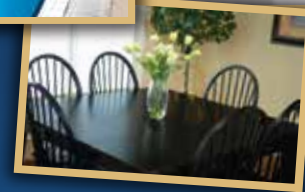


/MorganProperties



Welcome
HOME

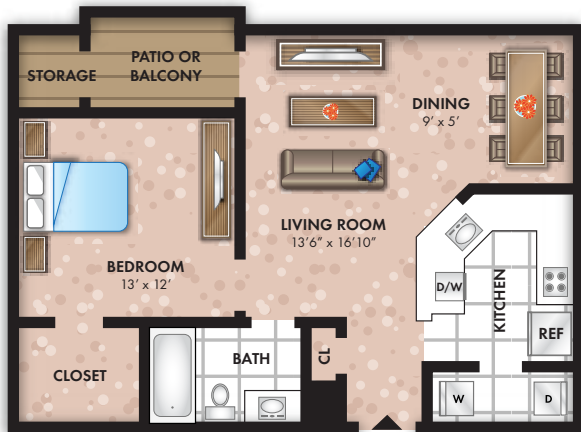
THE WATERWAY
APARTMENTS



**Spacious 1, 2 & 3 bedroom
apartment homes**

WWW.MORGAN-PROPERTIES.COM

WWW.MORGAN-PROPERTIES.COM



THE MURRAY
ONE BEDROOM / ONE BATH - 798 sq. ft.
 Square Footage is approximate

\$ _____



THE MICHIGAN
TWO BEDROOM / TWO BATH - 1,042-1,149 sq. ft.
 Square Footage is approximate

\$ _____



THE SUPERIOR
THREE BEDROOM / TWO BATH - 1,345 sq. ft.
 Square Footage is approximate

\$ _____

ADDITIONAL *Notes*
